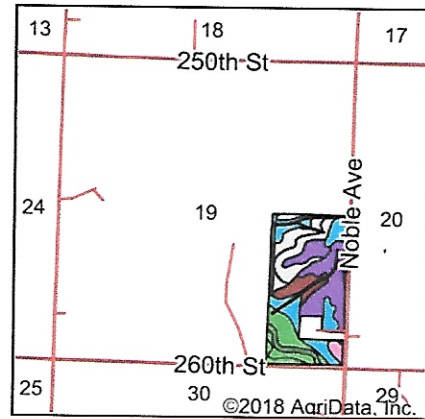
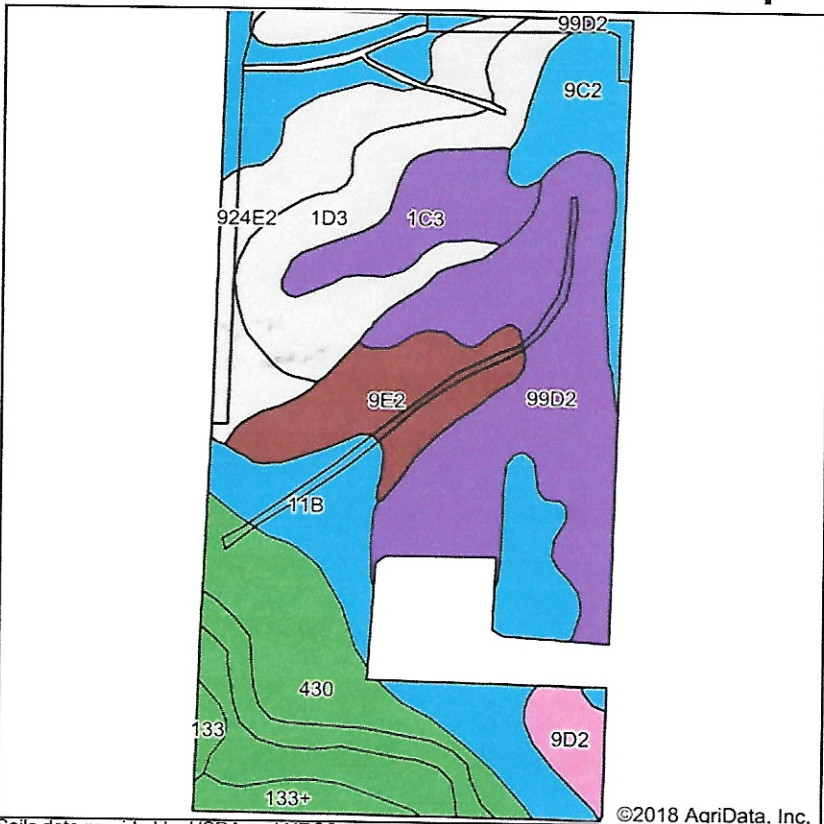


Soils Map



State: **Iowa**
 County: **Carroll**
 Location: **19-83N-34W**
 Township: **Pleasant Valley**
 Acres: **71.09**
 Date: **2/6/2018**



Soils data provided by USDA and NRCS.

©2018 AgriData, Inc.

Area Symbol: IA027, Soil Area Version: 22

Code	Soil Description	Acres	Percent of field	CSR2 Legend	Non-Irr Class *c	CSR2**	CSR
99D2	Exira silty clay loam, 9 to 14 percent slopes, moderately erode	14.56	20.5%		IIIe	56	55
11B	Colo-Judson silty clay loams, 0 to 5 percent slopes, occasionally flooded	13.23	18.6%		IIw	80	64
430	Ackmore silt loam, 0 to 2 percent slopes, occasionally flooded	11.45	16.1%		IIw	77	81
1D3	Ida silt loam, 9 to 14 percent slopes, severely eroded	7.66	10.8%		IIIe	32	39
924E2	Burchard-Adair clay loams, 14 to 18 percent slopes, moderately eroded	7.45	10.5%		VIe	36	13
9E2	Marshall silty clay loam, 14 to 20 percent slopes, eroded	5.37	7.6%		IVe	43	47
1C3	Ida silt loam, 5 to 9 percent slopes, severely eroded	3.98	5.6%		IIIe	58	49
9C2	Marshall silty clay loam, 5 to 9 percent slopes, eroded	3.98	5.6%		IIIe	87	66
9D2	Marshall silty clay loam, 9 to 14 percent slopes, eroded	1.62	2.3%		IIIe	61	57
133+	Colo silt loam, deep loess, 0 to 2 percent slopes, overwash, occasionally flooded	1.37	1.9%		IIw	78	83
133	Colo silty clay loam, deep loess, 0 to 2 percent slopes, occasionally flooded	0.42	0.6%		IIw	78	78

Weighted Average 60.7 55.1

**IA has updated the CSR values for each county to CSR2.

*c: Using Capabilities Class Dominant Condition Aggregation Method